

Our product range covers no less than 30 fan types divided into two design lines: Industrial and Heavy Duty. Our many fan types allow us to design a fan that can deliver the required air volume at the right pressure and for exactly the application you need.

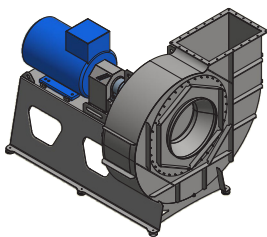
Industrial Line

Customized and low energy-consuming fans with exact 3D drawings supplied instantly.

A very cost efficient choice for energy-efficient industrial fans running 24/7.

The fan base is constructed from steel plate, and they are either directly driven or with coupling. This particular design makes them more cost-competitive than our HD line, while being both robust, light in design and adaptable to many types of applications.

Industrial Line fans are fully integrated into our 3D technology, which means that you can obtain a complete customized 3D drawing already together with your fan quotation. The drawing is available in sat or step format, allowing you to integrate it into your construction design immediately.



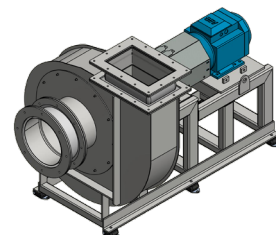
Heavy Duty Line

Fans in a very robust design and with special features to suit your exact requirements.

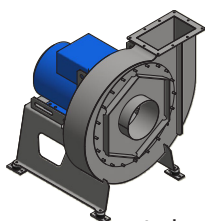
The optimal choice for industrial fans running 24/7 in a demanding environment or with special products.

The centrifugal fans in our Heavy Duty Line can be delivered either belt-driven, directly driven or with coupling, and the fan base is constructed from steel profiles.

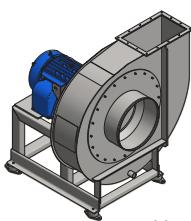
Our in-house engineering department as well as flexible in-house production allow us to custom-design our Heavy Duty fans to suit your exact requirements and needs.



Fans with direct drive

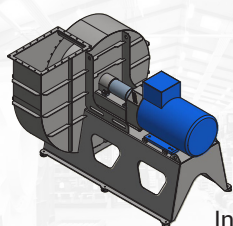


Industrial
HNP600-310

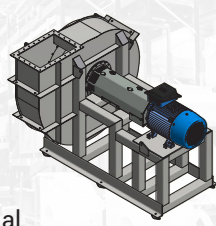


Heavy Duty
HAT56-400-37D

Fans with coupling

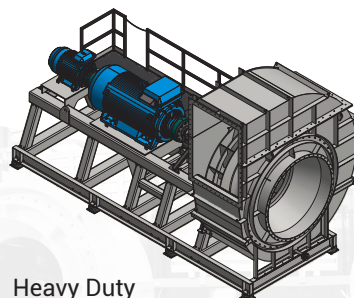


Industrial

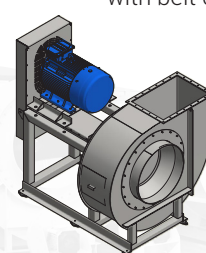


Heavy Duty

Fans with special requirements



Heavy Duty
DAT1800-800/KO
with emergency motor



Heavy Duty
DAT800-110/R
with belt drive

Centrifugal Fans Product Range

Industrial Line

Fan type	Transmission			Impeller size	Motor size	Static pressure, Pa	Capacity, m³/h	Material						
	Direct	Belt	Coupling					Clean air	Flue gas	Dustfilled air	Small material	Large material	Cutting function	
CATP	x		x	ø500 – ø1000	4 – 160 kW	< 1.700	< 65.000	x	x					
HTP	x		x	ø260 – ø1250	0.55 – 110 kW	< 24.000	< 4.000	x	x					
MATP	x		x	ø250 – ø2500	0.75 – 800 kW	< 3.500	< 250.000	x	x					
H56P	x		x	ø250 – ø2500	0.75 – 1000 kW	< 12.500	< 180.000	x	x					
DH56P	x		x	ø250 – ø2500	0.75 – 1000 kW	< 12.500	< 180.000	x	x					
D20P	x		x	ø560 – ø1120	4 – 160 kW	< 16.000	< 20.000	x	x					
MTP	x		x	ø260 – ø1250	0.55 – 160 kW	< 14.000	< 25.000	x	x	x				
HNP	x		x	ø400 – ø2250	4 – 710 kW	< 24.000	< 220.000	x	x	x				
DATP	x		x	ø250 – ø2500	0.75 – 1000 kW	< 8.500	< 300.000	x	x	x				
D40P	x		x	ø315 – ø2500	0.75 – 800 kW	< 16.000	< 70.000	x	x	x	x			
D56P	x		x	ø400 – ø2500	4 – 800 kW	< 12.000	< 140.000	x	x	x	x			
STSP	x		x	ø250 – ø2000	0.75 – 450 kW	< 5.000	< 60.000	x	x	x	x	x	x	x
HSTP	x		x	ø400 – ø800	4 – 250 kW	< 7.000	< 30.000	x	x	x	x	x	x	x
VBP	x		x	ø260 – ø1250	2.2 – 110 kW	< 8.000	< 25.000	x	x	x	x	x	x	x

Heavy Duty

CAT	x	x	x	ø500 – ø1000	4 – 160 kW	< 1.700	< 65.000	x	x					
MAT	x	x	x	ø250 – ø2500	0.75 – 800 kW	< 3.500	< 250.000	x	x					
HAT56	x	x	x	ø250 – ø2500	0.75 – 1000 kW	< 12.500	< 180.000	x	x					
DHAT56	x	x	x	ø250 – ø2500	0.75 – 1000 kW	< 12.500	< 180.000	x	x					
DST20	x	x	x	ø560 – ø1120	4 – 160 kW	< 16.000	< 20.000	x	x					
DAT	x	x	x	ø250 – ø2500	0.75 – 1000 kW	< 8.500	< 300.000	x	x	x				
DST40	x	x	x	ø315 – ø2500	0.75 – 800 kW	< 16.000	< 70.000	x	x	x	x			
DST56	x	x	x	ø400 – ø2500	4 – 800 kW	< 12.000	< 140.000	x	x	x	x			
STS	x	x	x	ø250 – ø2000	0.75 – 450 kW	< 5.000	< 60.000	x	x	x	x	x	x	x
HST	x	x	x	ø400 – ø800	4 – 250 kW	< 7.000	< 30.000	x	x	x	x	x	x	x



Head Office:

BarkerBille A/S

Borupvang 1A
2750 Ballerup
Denmark
Tel.: +45 44 97 41 92
mail@barkerbille.com

Holsted Office:

BarkerBille

Jørgen Hansens Vej 1
6670 Holsted
Denmark
Tel.: +45 44 97 41 92
mail@barkerbille.com

China Office:

BarkerBille Fans Manufacturing (Ningbo) Co., Ltd.

No. 99 Jinhe Road, Nordic Industrial Park,
Zhenhai, Ningbo, Zhejiang
China
Tel.: +86 574 8630 8790
china@barkerbille.com